

Anti-Beta Actin antibody Mouse mAb

使用说明书

◆Catalog and Package:

Catalog	Package
N1001-01	100uL

◆**Storage:** Store at -20℃ for one year. Avoid repeated freeze.

◆**Storage Buffer:** PBS with 0.02% sodium azide, 100 μg/mL BSA and 50% glycerol.

◆Product Information:

Protein full name	Actin, cytoplasmic 1
Synonyms	ACTB, BRWS1, PS1TP5BP1, Beta-actin, actin beta, Beta Cytoskeletal Actin, β-Actin
Immunogen	KLH conjugated Synthetic peptide corresponding to Mouse β-Actin
Uniprot ID	P60710
Isotype	IgG
Purity	Affinity purification
Subcellular location	Cytoplasm
Predicted MW. / Observed MW.	42 kDa / 45 kDa

◆Applications:

WB	Human, Mouse, Rat	1: 1000-1: 2000	spleen, kidney, brain
IHC/IF	Human, Mouse, Rat	1: 400-1: 2000	colon, kidney, liver
ICC/IF	Human, Mouse, Rat	1: 300-1: 1000	NIH/3T3, A549

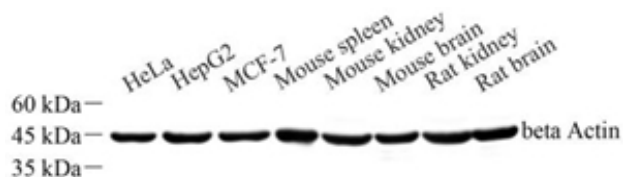
◆Background:

Actins are highly conserved proteins that are involved in various types of cell motility and are ubiquitously expressed in all eukaryotic cells. In vertebrates 3 main groups of actin isoforms, alpha, beta and gamma have been identified. The alpha actins are found in muscle tissues and are a major constituent of the contractile apparatus. The beta and gamma actins coexist in most cell types as components of the cytoskeleton and as mediators of internal cell motility.

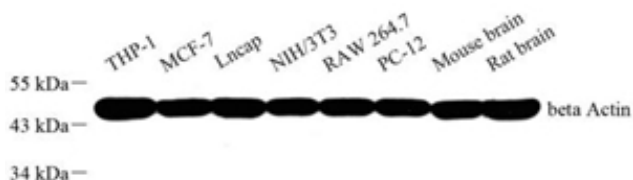
◆NOTE:

1. This product is intended for research only.
2. This product is recommended to dilute with the Primary Antibody Dilution Buffer (Cat: P322).

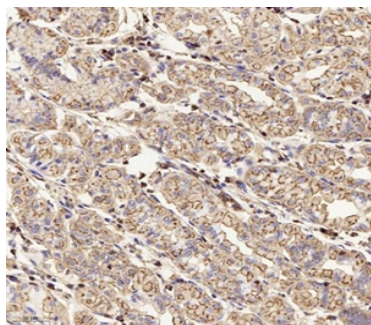
◆Images:



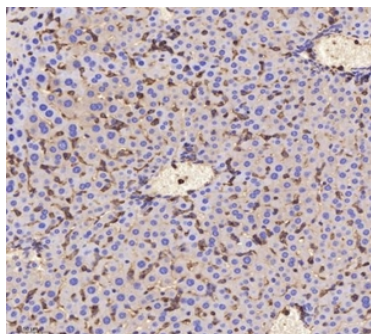
Western blot analysis of beta Actin (Cat: SA2194) at dilution of 1: 1000



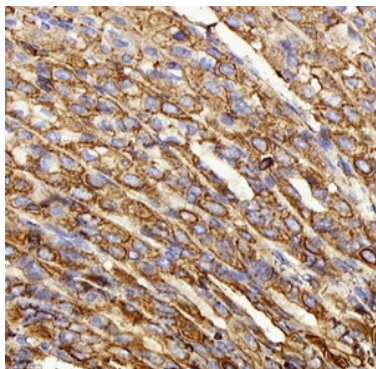
Western blot analysis of beta Actin (Cat: SA2194) at dilution of 1: 1000



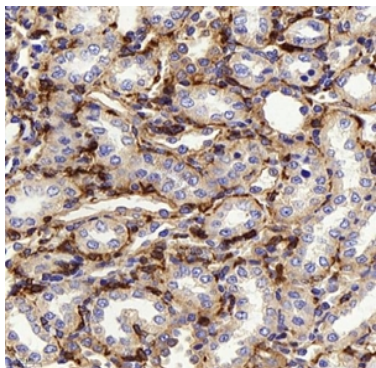
Immunohistochemistry of paraffin embedded human colon using actin (Cat: SA2194) at dilution of 1: 1000 (200x lens)



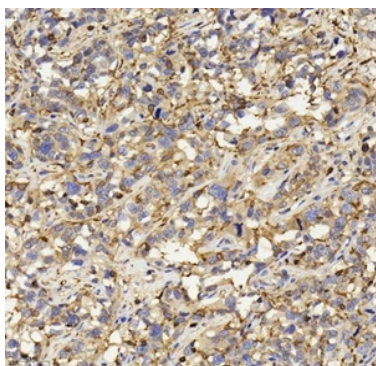
Immunohistochemistry of paraffin embedded rat liver using actin (Cat: SA2194) at dilution of 1: 1000 (200x lens)



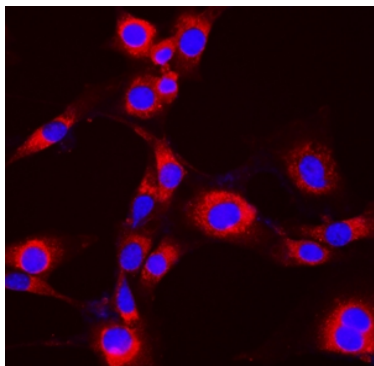
Immunohistochemistry of paraffin embedded mouse stomach using actin (Cat: SA2194) at dilution of 1: 1000 (400x lens)



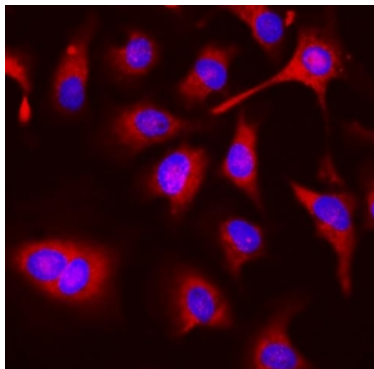
Immunohistochemistry of paraffin embedded rat kidney using actin (Cat: SA2194) at dilution of 1: 1000 (400x lens)



Immunohistochemistry of paraffin embedded human liver cancer using actin (Cat: SA2194) at dilution of 1: 1000 (200x lens)



Immunocytochemistry analysis of 4% paraformaldehyde fixed NIH/3T3 cells using β -Actin (Cat: SA2194) at dilution of 1: 1000



Immunocytochemistry analysis of 4% paraformaldehyde fixed HeLa cells using β -Actin (Cat: SA2194) at dilution of 1: 1000

=====



扫码关注我们